



Pattern « Étoile Polaris » © par PUCA®



Made by Puca®



November 2023 © Puca
www.perlepuca.canalblog.com
PUCA© All rights reserved



Material : For double star

- 24 Arcos® par Puca®- Paris
- 12 Kalos® par Puca®- Paris
- 12 Khéops® par Puca®- Paris
- 24 Samos® par Puca®- Paris
- 36 Bicones 3 mm (B3)
- Seed Beads 15/0 (SB15), 11/0 (SB11)
- 1 Jump ring or Cymbal
- 1 Chain 15 cm or leather cord
- Fireline 0.12

Two versions for this star : single or double 😊



1) Place alternately 6 Samos and 6 SB11.
Close in circle.
Exit through the SB11



2) Insert 5 SB15 between each SB11.
All the way around 😊



3) Here is the result 😊
Exit through the central SB15



4) Insert 1 B3 between each central SB15. Pass through all the B3.
Tighten and exit HERE through the second hole of the Samos



5) Insert 1 Khéops, 3 SB15 through the second hole of the Khéops and through the second hole of the Samos.
All the way around 😊



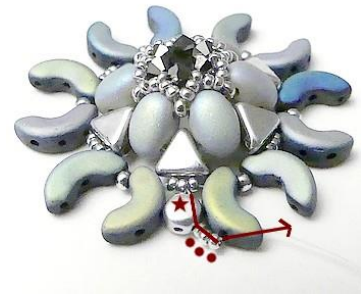
6) Here is the result 😊
Exit through the three SB15 HERE



7) Insert 1 Arcos, 1 SB11, 1 Arcos through the following three SB15. All the way around 😊



8) Here is the result 😊 Exit through the central SB15 HERE



9) Insert 1 Kalos and 3 SB15 through the Arcos



10) Insert 1 Samos between the Arcos



11) Insert 3 SB15, 1 Kalos through the central SB15 and exit through the second hole of the Kalos



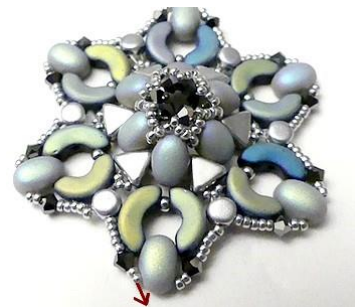
12) Insert 3 SB15 through the Arcos



13) Repeat steps 9 to 12 throughout the row. Here is the result 😊 Exit through the 3 SB15 HERE



14) Insert 2 SB15, 1 B3 and 2 SB15 in the second hole of the Samos. Repeat over the whole row



15) Here is the result 😊 Exit HERE through the two SB15



16) Insert 2 SB15, 1 jump ring or cymbal, 2 SB15 and exit HERE



17) Insert 2 SB11 and exit HERE



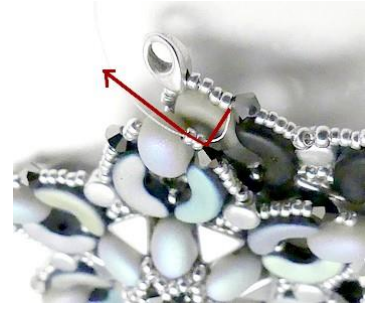
18) Insert 3 SB15, 1 SB11, 3 SB15 and exit HERE. Repeat steps 16 to 18 throughout the row



19) Here is the result 😊 Your first version is finished



20) Second version : exit HERE through the B3 and make a second element (steps 1 to 19)



21) Assemble through the 2 SB15 HERE



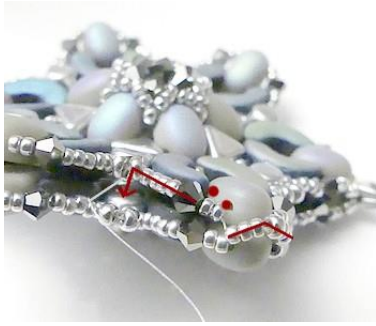
22) Insert 2 SB15 through the jump ring or the Cymbal



23) Insert 2 SB15 and exit through the SB11 HERE



24) Insert 1 SB11 to assemble opposite in the other element and exit HERE



25) Pass through the 7 seed beads over the Samos and insert 2 SB15 through the B3 etc. All the way around by repeating steps 20 to 25



26) Insert the chain or leather cord.
Your double star Polaris © is finished

I wish you a happy beading. I offer you this pattern.

Please do not change its design and only use Les Perles par Puca®-Paris
If you publish or share this pattern « THANK YOU » for not forgetting to notify that it is Puca® who created it.

THANK YOU 😊

